



# **GARDEN HILLS ELEMENTARY:**

## DESIGN COMMITTEE MEETING

ATLANTA PUBLIC SCHOOLS // DECEMBER 11





# AGENDA

- 1) PROJECT STATUS
- 2) PROJECT SCOPE
- 3) PROJECT SCHEDULE
- 4) LOGISTICS PLAN
- 5) ANTICIPATED CHALLENGES
- 6) Q&A

Project Team:

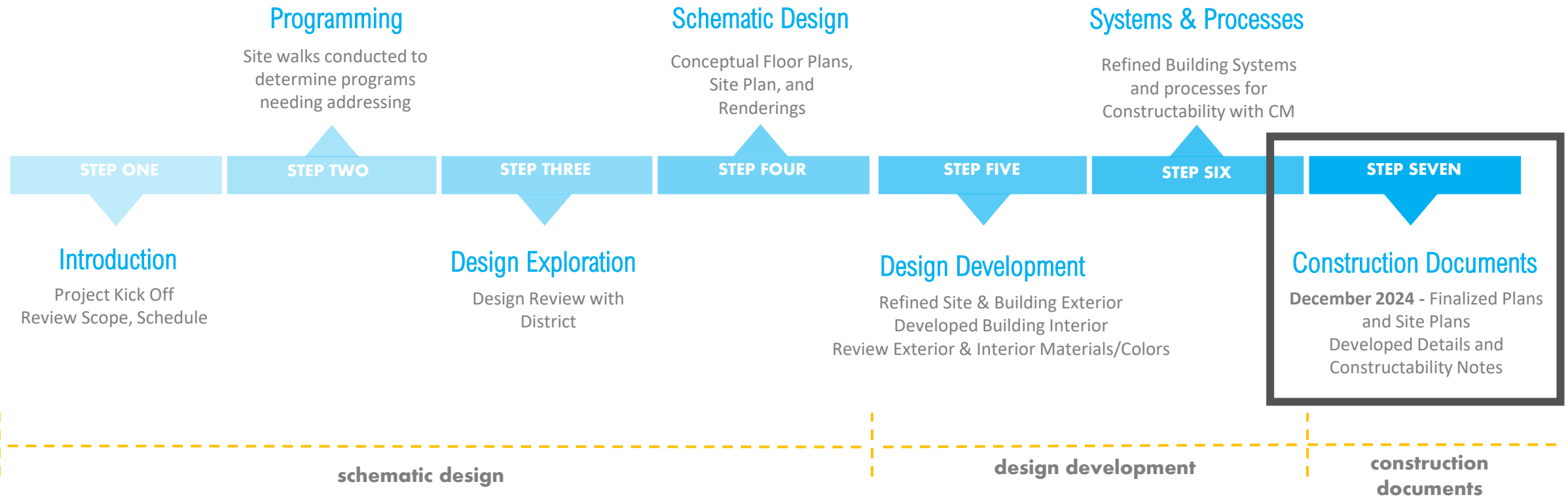


**MAXAIR** Mechanical  
Building Efficiency and Sustainability

  
A Service Logic Company

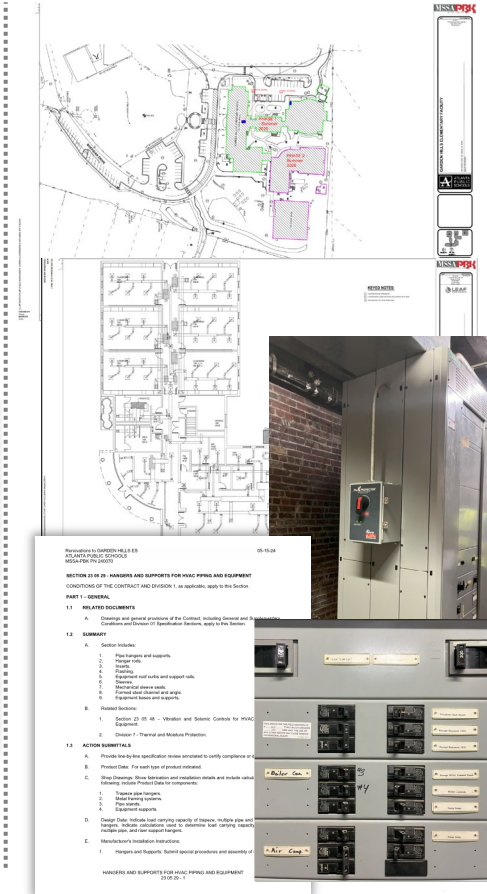
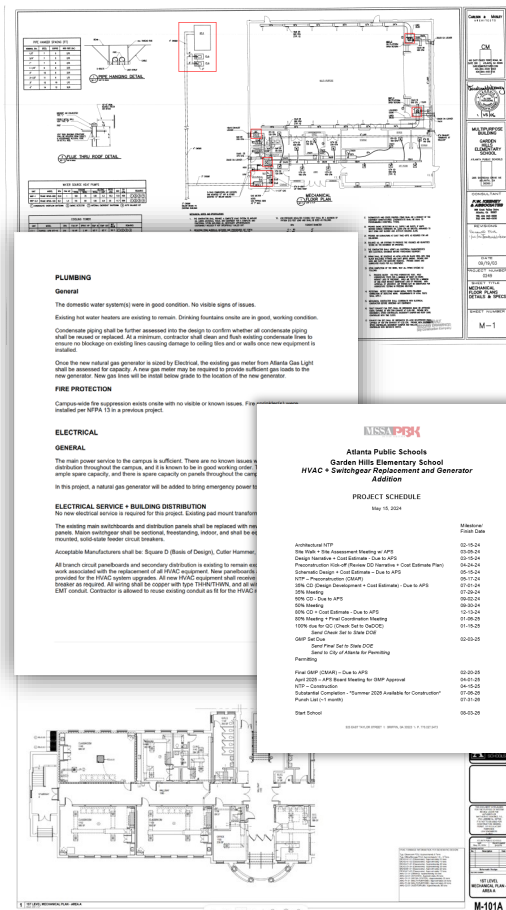
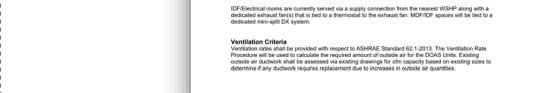
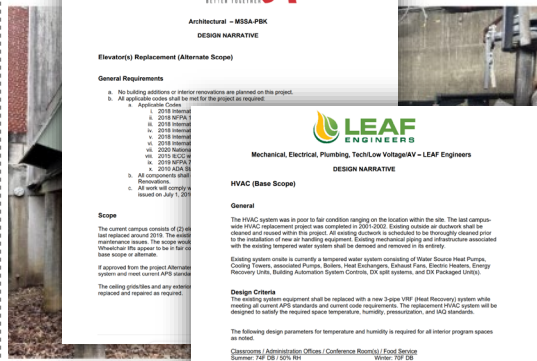
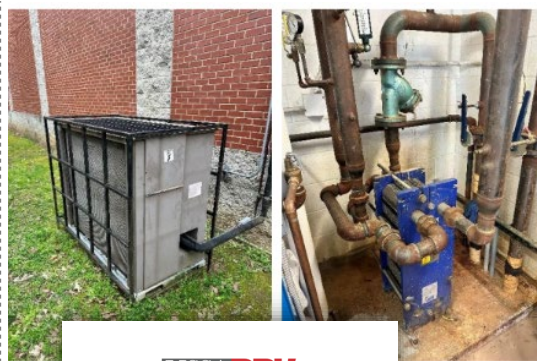


# Where are we today?





# What is Construction Documentation?



## Site Assessments and Scope Refinement

## Design Development

## Construction Documents



# What's going on at Garden Hills ES?

- What's new:
  1. New Mechanical Systems (Air Conditioning, Heating, Dehumidifying, etc.)
  2. Electrical System Upgrades (Generator, Switchgear, Power Distribution Components, etc.)
  3. Technology System Upgrades (Fire Alarm, Intercom, Intrusion Detection, etc.)
  4. New Student Restroom Floors and Partitions
  5. New Kitchen Hood Vent
  6. Exterior Aesthetic Assessment / Repairs
  7. Interior Updates
  8. Wheelchair Lift Replacement
- What will be impacted:
  1. Some exterior construction activities will be visible
  2. No interruption to classes or student operation will be felt
  3. A fresh interior for students that looks improved, feels improved, and is positively affecting their learning environment will be accomplished

\*Pending January APS Board Approval



How long will this take?





# How long will this take?

- Phase 1: May 2025 – July 25, 2025
  1. Construction will be visible from the exterior
  2. System Upgrades will be installed in Building 1





# How long will this take?

- Phase 1: May 2025 – July 25, 2025
  1. Construction will be visible from the exterior
  2. System Upgrades will be installed in Building 1
- Phase 2: September 2025 – May 2026
  1. Occupied school, construction activity will be kept to a minimum
  2. System Upgrades will be installed during holiday breaks in Buildings 3, portions of 4 & portions of 5





# How long will this take?

- Phase 1: May 2025 – July 25, 2025
  1. Construction will be visible from the exterior
  2. System Upgrades will be installed in Building 1
- Phase 2: September 2025 – May 2026
  1. Occupied school, construction activity will be kept to a minimum
  2. System Upgrades will be installed during holiday breaks in Buildings 3, portions of 4 & portions of 5
- Phase 3: May 2026 – July 24, 2026
  1. Construction will be visible from the exterior
  2. System Upgrades will be installed in Buildings 2, remainder of 4, & remainder of 5
  3. Interior finishes will be applied
    1. Fresh paint
    2. Student restroom upgrades





# LOGISTICS PLAN





## ANTICIPATED CHALLENGES

### What should I know ahead of time?

- The Board of Education will review the project at the January Board Meeting for approval
- Construction Activity will be visible outside of Building 1 and 5 during the summers of 2025 and 2026
- Construction Crew will avoid occupied buildings while school is in session
- Summer activities will not be scheduled on campus for the summers of 2025 & 2026



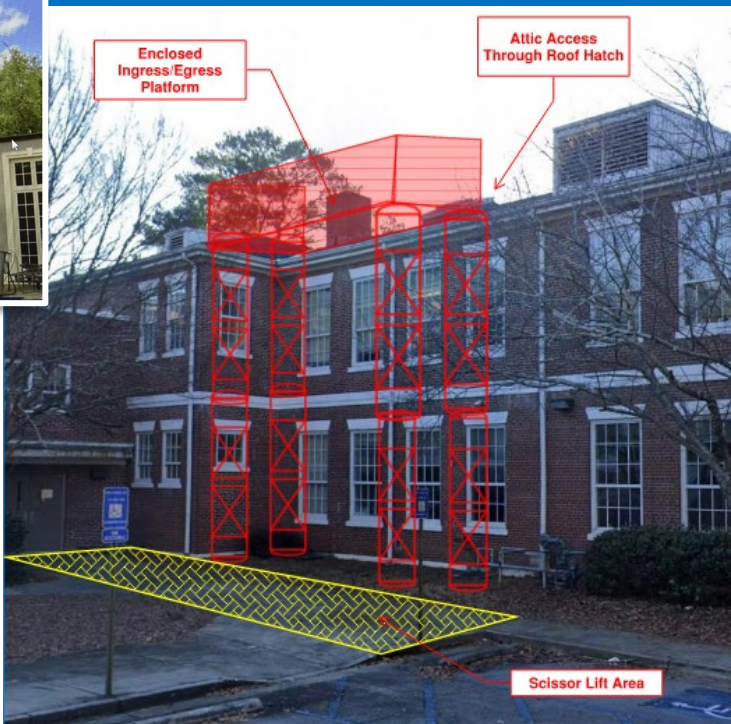


# Other Questions?





# APPENDIX



Material Tracking Log							
ID	Description	Tag	Qty.	Vendor	Voltage	Lead time (weeks)	Notes
1	DOAS Split Air Handlers		6	Daikin		11-12 Weeks	Indoor/Poutdoor
2	VRV/FCU's		78	Daikin		2-3 weeks	Mostly in stock per Daikin
3	Minisplits		3	Daikin		In Stock	
4	Large Air Handlers		4	Daikin		14-16 Weeks	Gym & Auditorium & Media Center
5	Electrical Switchgear		2			30 weeks	
6	Generator		2			16-20 Weeks	
9	Electrical Panel	EDP-1	1			12 Weeks	
10	Electrical Panel	EH-1	1			6 Weeks	
11	Electrical Panel	EH-2	1			6 Weeks	
12	Electrical Panel	EH-3	1			6 Weeks	
13	Electrical Panel	EL-1	1			12 Weeks	
14	Electrical Panel	EL-2	1			12 Weeks	
15	Electrical Panel	EL-3	1			12 Weeks	



# APPENDIX



Facility:  
**GARDEN HILLS  
ELEMENTARY  
FACILITY**  
285 Sheridan Drive, N.E.  
Atlanta, GA 30305  
Georgia DOE Facility Number:  
**1560**

Site Area: 8.0 Acres

Total Building Area: 82,176 s.f.

DOE Building Number: 1560

Date Occupied: 1938

Sq Ft: 21162

IUs: 16

2011: 1958 9062 4

2020: 1949 6818 1

2030: 1993 5027 10

2040: 2000 16320 7

2050: 2005 9634 2

Key Plan:

Date: 10-10-2023

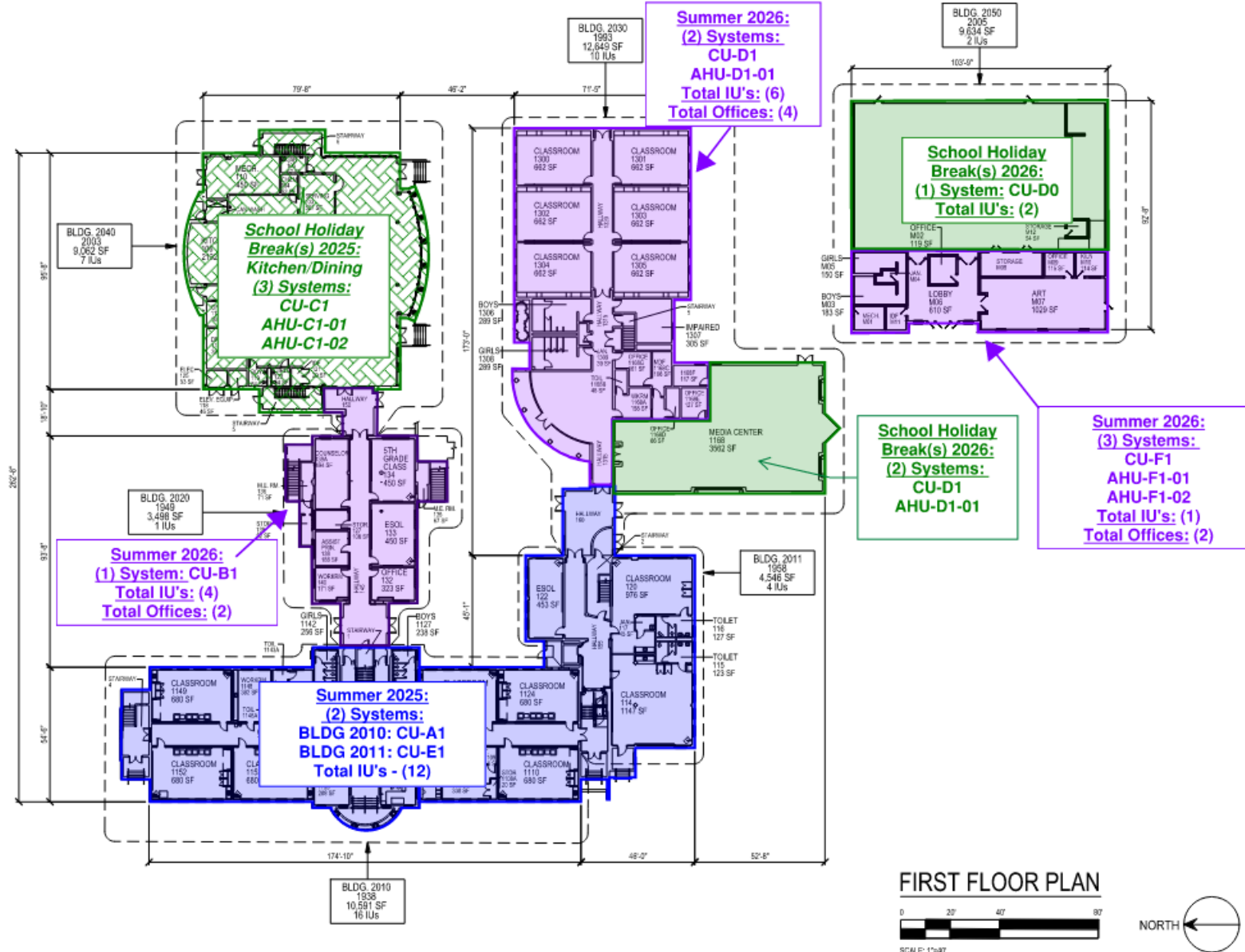
Revision:

Sheet Title:

FIRST FLOOR PLAN

Sheet Number:

A1





# APPENDIX



Facility:  
**GARDEN HILLS  
ELEMENTARY  
FACILITY**  
285 Sheridan Drive, N.E.  
Atlanta, GA 30305  
Georgia DOE Facility Number:  
**1560**

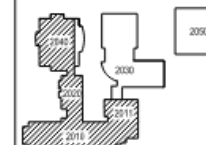
IUs: 40

Site Area: 8.0 Acres

Total Building Area: 82,176 s.f.

DOE Building Number	Date Completed	Sq Ft	IUs
2010	1938	21182	18
2011	1958	9092	4
2020	1949	6818	1
2030	1993	5027	10
2040	2000	16320	7
2050	2005	9634	2

Key Plans:



Date: 10-10-2023

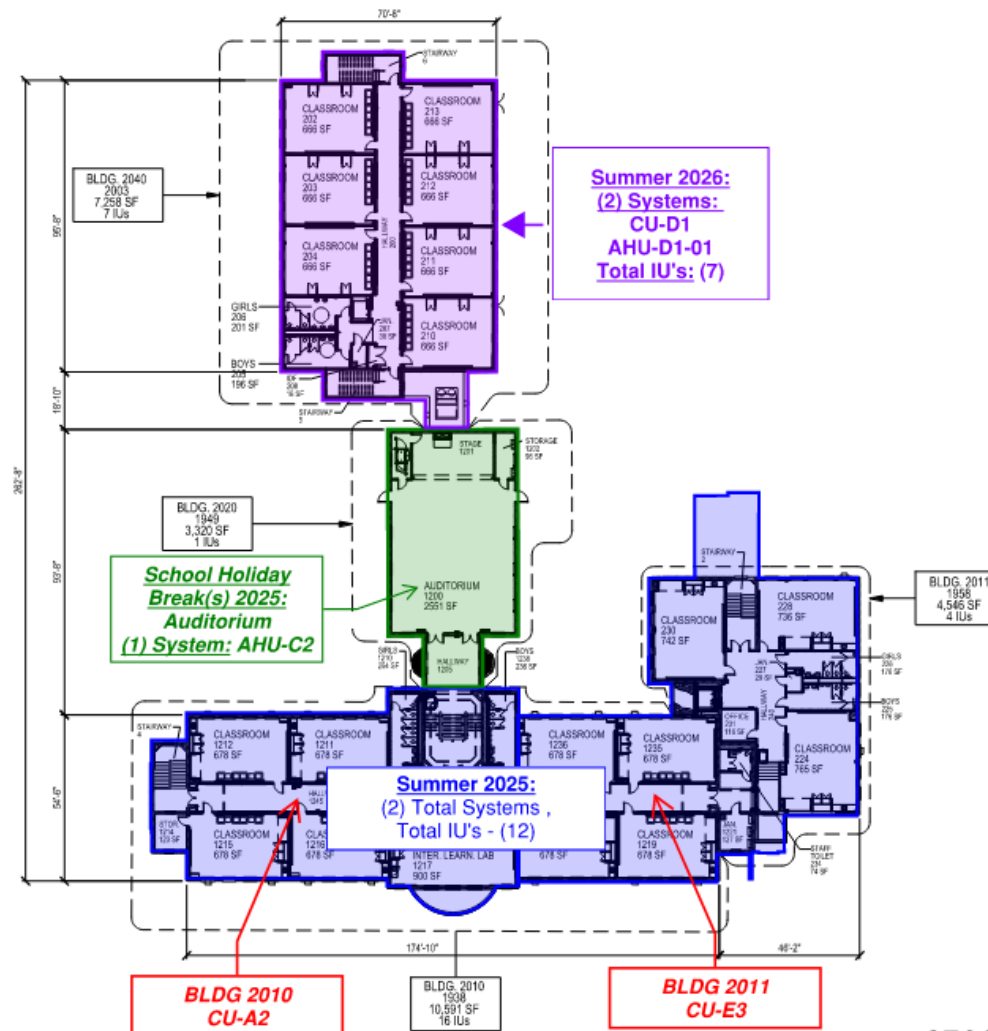
Revision:

Sheet Title:

**SECOND FLOOR PLAN**

Sheet Number:

**A2**



**SECOND FLOOR PLAN**



SCALE: 1"=40'





# APPENDIX



Facility:  
**GARDEN HILLS  
ELEMENTARY  
FACILITY**  
285 Sheridan Drive, N.E.  
Atlanta, GA 30305  
Georgia DOE Facility Number:  
**1560**

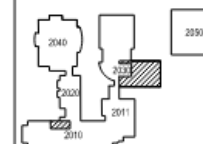
S.I.N.: 40

Site Area: 8.0 Acres

Total Building Area: 82,176 s.f.

DOE Building Number	Open	Open	Open
	Open	Open	Open
	Open	Open	Open
	Open	Open	Open
2010	1838	21182	16
2011	1058	9292	4
2020	1949	8818	1
2030	1963	5227	10
2040	2000	15303	7
2050	2005	9534	2

Key Plan:



Date: 10-10-2023

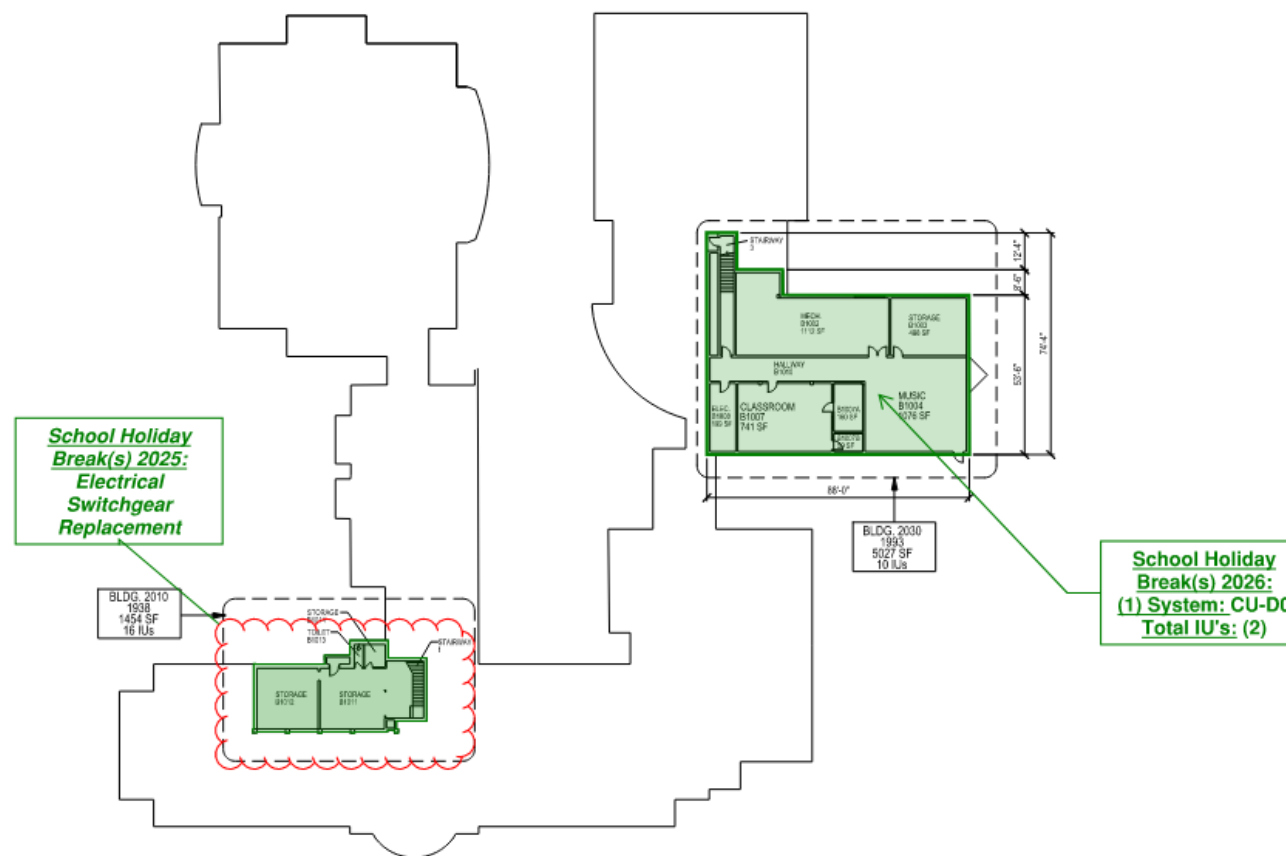
Revision:

Sheet Title:

**BASEMENT FLOOR PLAN**

Sheet Number:

**AB**



**BASEMENT FLOOR PLAN**

